

New Jersey Conservation POSTER CONTEST



2021

Prizes for
Statewide

Competition

1st Place \$200

2nd Place \$100

3rd Place \$50



The New Jersey
Conservation Poster
Contest is open to all
students in grades 2-12
and students compete
in grade categories.
Local Soil Conservation
District prizes may also
be awarded!

Contest Sponsors:

The NJ Department of Agriculture,
the NJ Association of Conservation Districts, and
your local Soil Conservation District



Who Can Participate ?

The Poster Contest is open to all students in grades 2-12 — public, private, home schooled and youth groups included.

Why Participate ?

Designing a poster and researching the theme can give you a voice in your community about important conservation issues. Good posters capture people's attention and deliver stories in a way that everyone can understand. A powerful graphic can inspire people to be concerned about conservation.

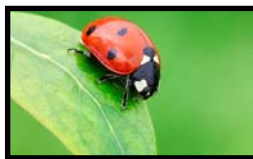
Information Resources: *Healthy Forests = Healthy Communities*

Trees are a big part of the resources we use every day. Trees and plants give us clean air and water. Trees and their roots help keep soil where it belongs. Trees give us wood to build our homes. We depend upon trees every day. Forests are one of the most vital ecosystems to human life. They are alive and working 24 hours a day and 7 days a week. We aren't the only ones that need trees. Animals need trees too. Arboreal animals are animals that spend most of their time in trees, such as squirrels, bats, birds, monkeys, snake and frogs. Native wildlife is becoming decimated by lack of food, plant species are disappearing and local industry has been impacted due to declining tree populations. Providing accurate information is essential. Find out what trees grow in your area, and see what your community is doing to help them. You will find a variety of opinions from a variety of sources about how to best care for our trees.

You can find resources at your school or public library, science books, local newspapers, nature centers and from the NACD website www.nacdnet.org Stewardship & Education section. Get guidance from your teacher or parents to find information on the internet about healthy forests.

Web Resources:

- <https://www.nacdnet.org/general-resources/conservation-district-directory/>
- <https://healthyforests.org/>
- <http://www.nacdnet.org/general-resources/stewardship-program/>
- <https://www.plt.org/greenschools>
- <https://www.treepeople.org/tree-benefits>
- <https://www.fs.usda.gov/learn/kids>
- <https://discovertheforest.org/>
- <https://www.fs.usda.gov/nac/about/>
- <https://www.learnforests.org/>



DID YOU KNOW.....

- ◆ Trees need help to grow some of the fruits we eat like sweet cherries and apples. The trees need help from pollinators like bees. The bees carry pollen from part of the bloom to another part so fruit can grow.
- ◆ Some soap is made from tree sap.
- ◆ Trees help cool the earth by providing shade. It is 10 to 15 degrees cooler in the shade than in the sun.
- ◆ Forests help make it rain. Trees soak up water from the soil, heat from the sun makes the leaves lose the water and it ends up in the atmosphere.
- ◆ Tree parts have been used to make medicine for thousands of years.
- ◆ Trees are a renewable resource. When trees are harvested for use, the trees can be replaced by planting new trees.
- ◆ It is important to plant native trees. They are adapted to your soil as well as good for native wildlife food and shelter.

Online Tips for Creating an Effective Poster

The National Association of Conservation Districts at www.nacdnet.org provides links to assist with creating posters. Click on the "Stewardship & Education" tab and find "Poster Contest" under "Contests" for an overview of the 2021 theme, and for tips on what makes a good poster and the National Visual Arts Standards.

NJ Soil Conservation Districts (SCD) are special purpose subdivisions of the State. In cooperation with the State Soil Conservation Committee, they are empowered to conserve and manage soil and water resources and address stormwater, soil erosion and sedimentation problems that result from land disturbance activities. There are 15 Soil Conservation Districts in New Jersey. (See back page for list.)

In response to growing public concern for water quality, NJ conservation districts have become the primary local governmental agencies responsible for monitoring nonpoint sources of pollution associated with agriculture, construction and mining. The technical services of the USDA, Natural Resources Conservation Service and other resource agencies are made available through the districts.

New Jersey Rules

These rules must be followed for your poster to be accepted by your local Soil Conservation District. Entries that do not conform to the rules will not be judged.

Please review and follow your local Soil District rules for the deadline!

1. Clearly print your name and information on the entry form **AND** tape the completed entry form to the back of your poster.
2. Tape a 1-3 sentence explanation of your poster, neatly written on a 3" x 5" or 4" x 6" index card, to the back of the poster. Be sure to write your name and county on the index card.
3. **Contest theme "Healthy Forests = Healthy Communities" must appear somewhere in your poster.** Leave a 1 inch border of white space at the edges of the poster; lettering should not run on to the edges.
4. The poster must be flat, no 3-D objects.
5. Poster size must be between 8.5" x 11" and 22" x 28".
6. Any medium may be used including paint, crayons, colored pencils, charcoal and paper. Computer designed artwork is allowed **but clip art is not acceptable.** No collage or montage.
7. One poster per student.
8. The poster must be the original artwork of the student.
9. **ENTRY DEADLINE:** See Local District Rules
10. Decisions of the judges are final and all entries become the property of the contest sponsors. →

Poster Evaluations

Posters will be judged on the following criteria: Relevance to contest theme: **"Healthy Forest = Healthy Communities"**

- | | |
|------------------------|------------------------|
| — Conservation message | — Visual effectiveness |
| — Originality | — Overall appeal |

CASH PRIZES for the New Jersey Statewide competition are awarded by the:

New Jersey Association of Conservation Districts

First - \$200 Second - \$100 Third - \$50

Local District Rules & Prizes

Contact your local district to verify participation (Page 4)

The District will award \$50.00 to the winner in each grade category!

Entries must be received by the District no later than March 12, 2021

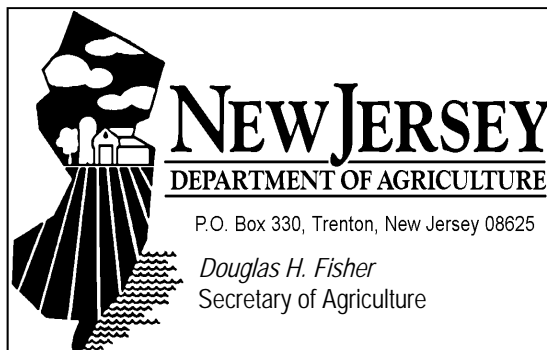
**Deliver Entries to:
Bergen County Soil Conservation District
700 Kinderkamack Rd. Suite 106
Oradell, NJ 07649**

**For more info please visit
www.bergenscd.org**



**New Jersey Association
of
Conservation
Districts**

<http://www.njacd.org/>



NEW JERSEY SOIL CONSERVATION DISTRICTS

Please contact your local SCD to verify their participation!

Bergen County SCD

700 Kinderkamack Rd. Ste 106
Oradell, NJ 07649
(201) 261-4407
www.bergenscd.org

Burlington County SCD

1971 Jacksonville Jobstown Rd.
Columbus, NJ 08022
(609) 267-7410
www.bscd.org

Camden County SCD

423 Commerce Lane, Suite 1
W. Berlin, NJ 08091
(856) 767-6299
www.camdenscd.org

Cape-Atlantic SCD

Atlantic County Office Bldg.
6260 Old Harding Highway
Mays Landing, NJ 08330
(609) 625-3144
www.capeatlantic.org

Cumberland-Salem SCD

P. O. Box 68
1516 Route 77
Deerfield, NJ 08313
(856) 451-2422
www.cumberlandsalemsoil.com

Freehold SCD

(Monmouth & Middlesex Counties)
4000 Kozloski Rd., Suite 5
Freehold, NJ 07728
(732) 683-8500
www.freeholdsoil.org
info@freeholdscd.org

Gloucester County SCD

14 Parke Place, Suite B
Sewell, NJ 08080
(856) 589-5250
gloucester@gloucesterscd.org
www.gloucesterscd.org

Hudson, Essex, Passaic SCD

80 Orchard St
Bloomfield, NJ 07003
(862) 333-4505
information@hepscd.org

Hunterdon County SCD

687 Pittstown Road
Frenchtown, NJ 08825
(908) 788-9466
hcsd687@embarqmail.com

Mercer County SCD

590 Hughes Drive
Hamilton Square, NJ 08690
(609) 586-9603
www.mercerscd.org

Morris County SCD

Court House, P.O. Box 900
Morristown, NJ 07960-0900
(973) 285-2953
www.mcscd.org

Ocean County SCD

714 Lacey Road
Forked River, NJ 08731
(609) 971-7002
www.soildistrict.org

Somerset-Union SCD

Somerset County
308 Milltown Road 4-H Bldg.
Bridgewater, NJ 08807
(908) 526-2701
soilconsrv@co.somerset.nj.us

Sussex County SCD

224 Stiger Street
Hackettstown, NJ 07840
(908) 852-2579
www.warrencountyscd.com

Warren County SCD

224 Stiger Street
Hackettstown, NJ 07840
(908) 852-2579
www.warrencountyscd.com

2021 Poster Contest Entry Form

Attach this form to back of each poster

Circle Your Grade Category: 2nd—3rd 4th—6th 7th—9th 10th—12th

Your County Soil Conservation District: (see above) _____

Student Name: _____ Grade: _____

Home Address: _____

Town: _____ NJ Zip Code: _____

Phone: _____

Winners will be notified by email, if possible. Please neatly print a suitable email address:

If your poster was created through a school project or assignment please complete teacher & school information.

Teacher Name: _____

School Name: _____

School Address: _____

Town: _____ NJ Zip Code: _____

Phone: _____

Email: _____

I certify that this poster is the original artwork of the student named above. Parent OR Teacher Must Sign.

Signature ☐ Parent

☐ OR Teacher

Student Signature